



APPROXIMATING SOCIAL GRADE ON THE 2011 CENSUS

How and Why?

Helen Lambert
6th Nov 2013





Outline

Why is Social Grade important in research?

Developing the model for Census 2011

Comparing with other sources

2011 Census example data

What Social Grade approximation data is available to use on the Census 2011?

Why is Social Grade important in research?

Why is Social Grade important in research?



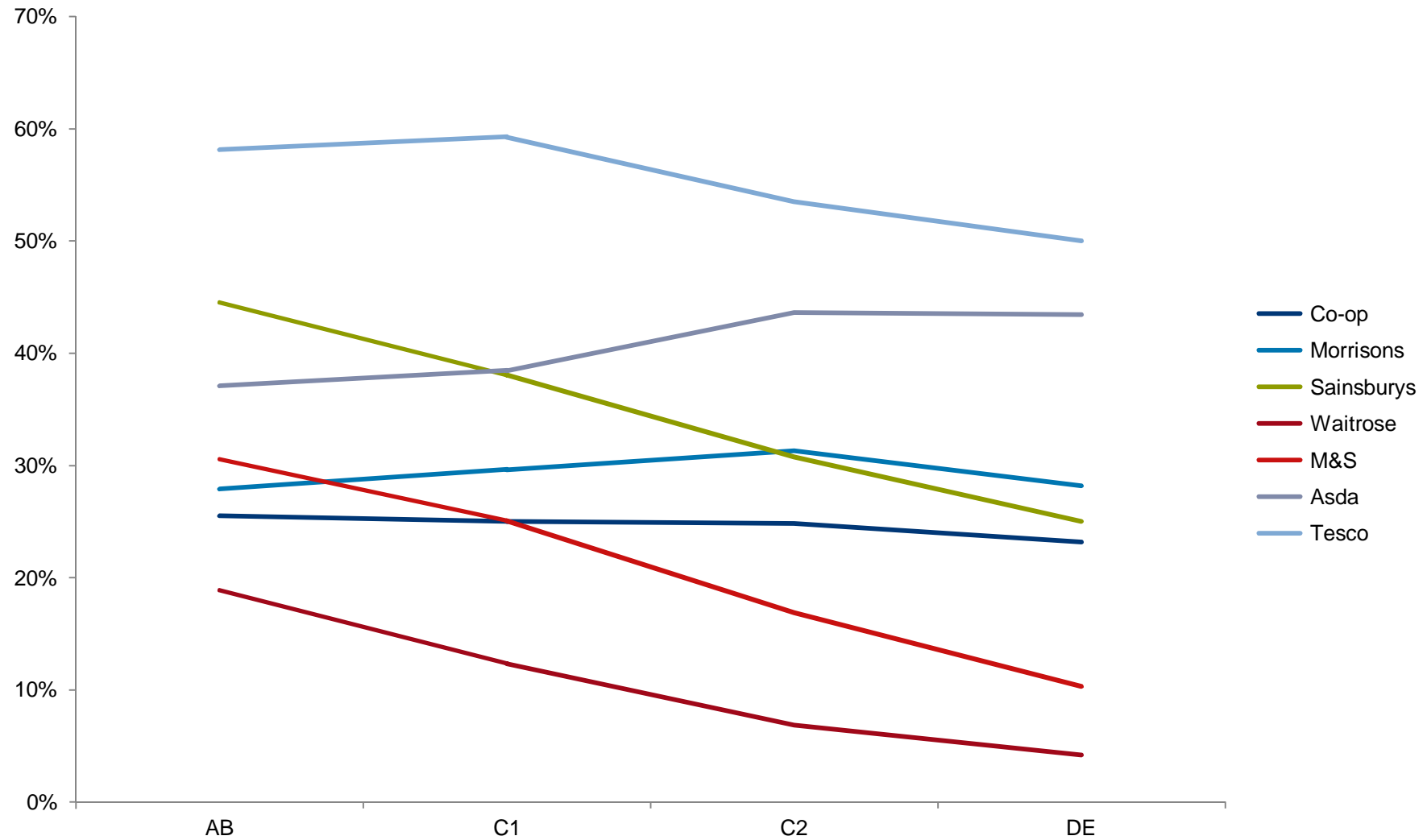
Common Currency within Market research

Depending on the arena of commercial or social research, it differentiates on a range of attributes from consumption as well as attitudes.

Need it as a standard currency for sample control and weighting in market research

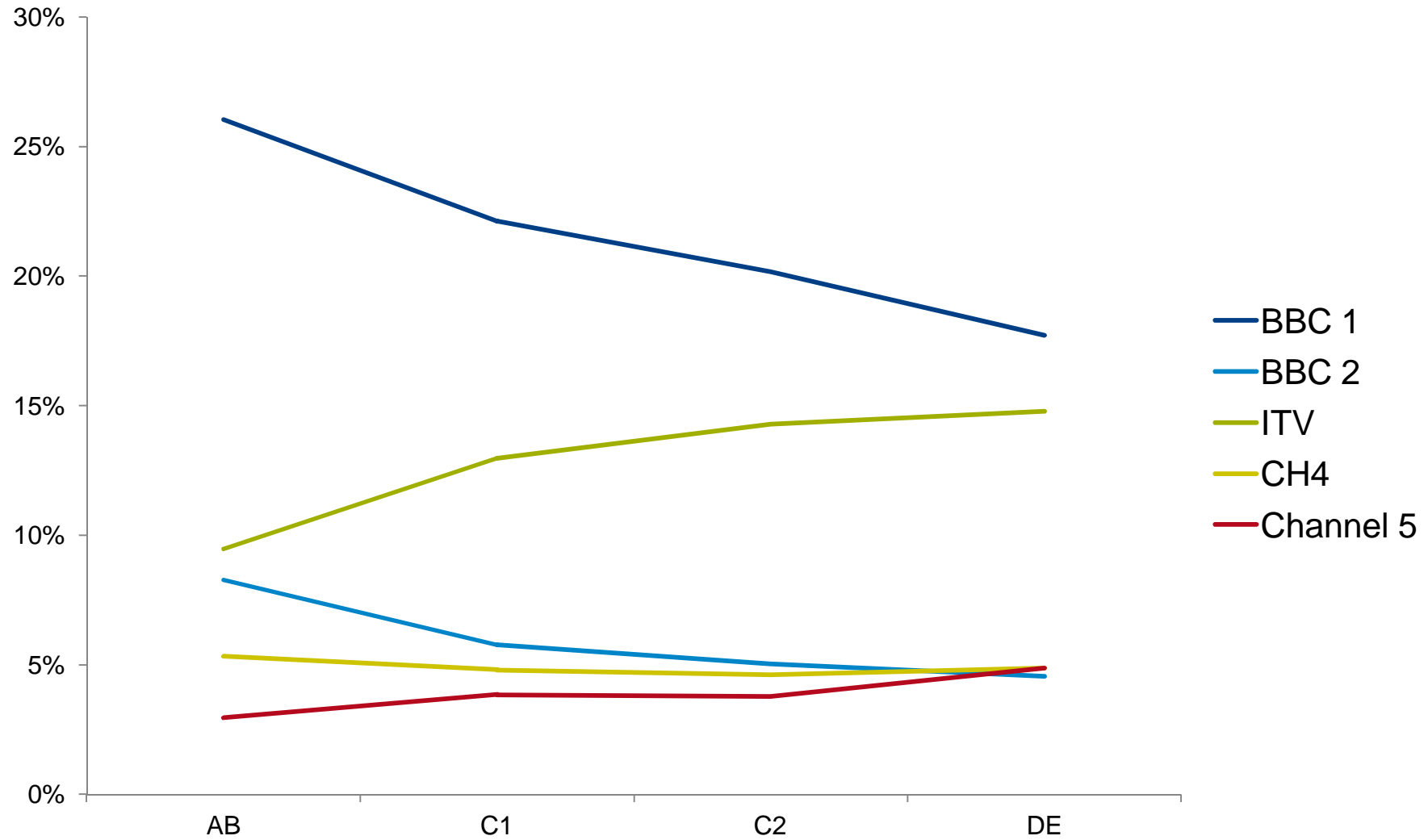
Need to be able to profile geographic areas and niche audiences to make the census data relevant to Market Research

Percentage of regular shoppers at various supermarkets by Social Grade of HRP



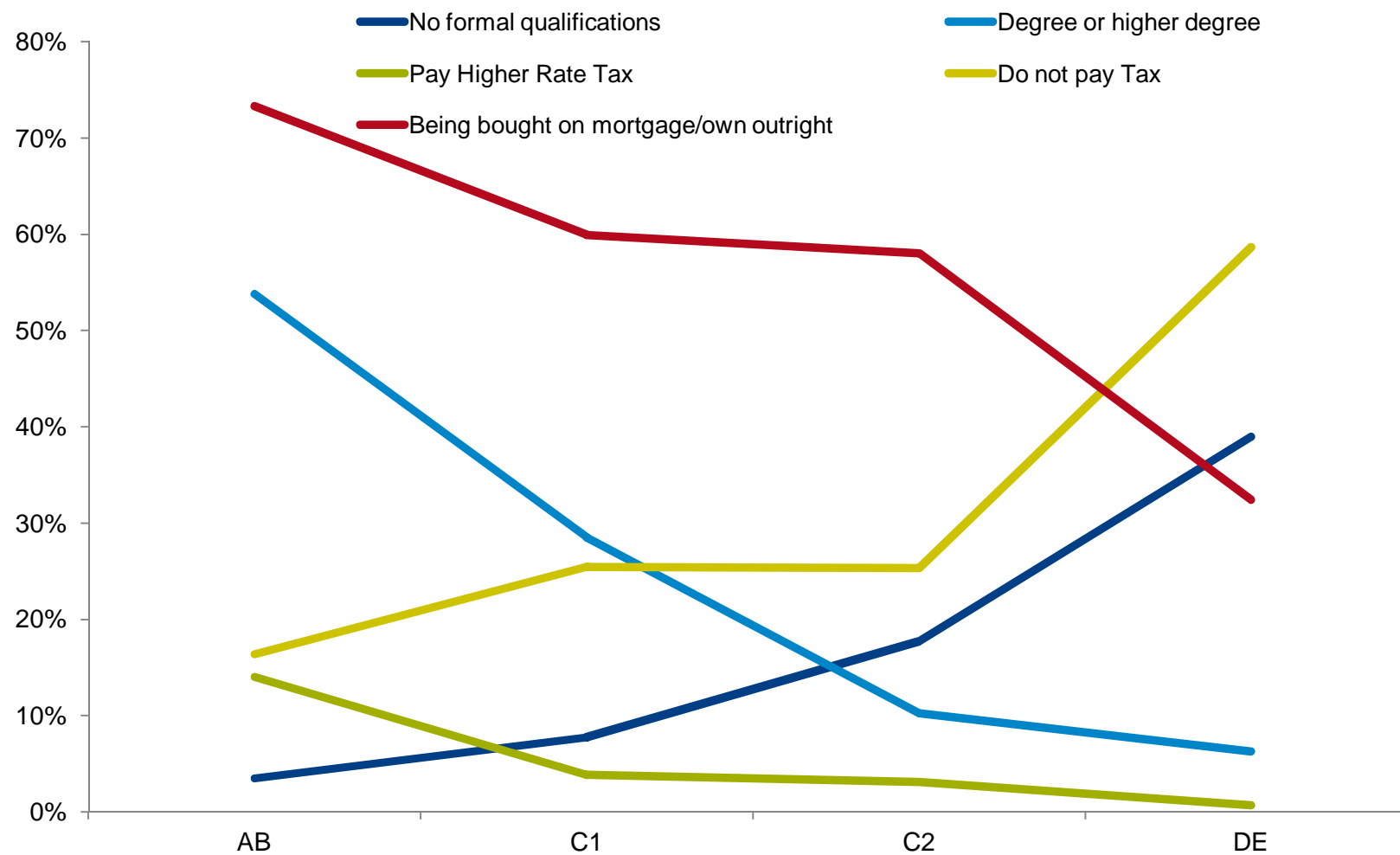
Source: Financial Research Survey June 2013

Time spent watching 5 'terrestrial' channels, by Social Grade



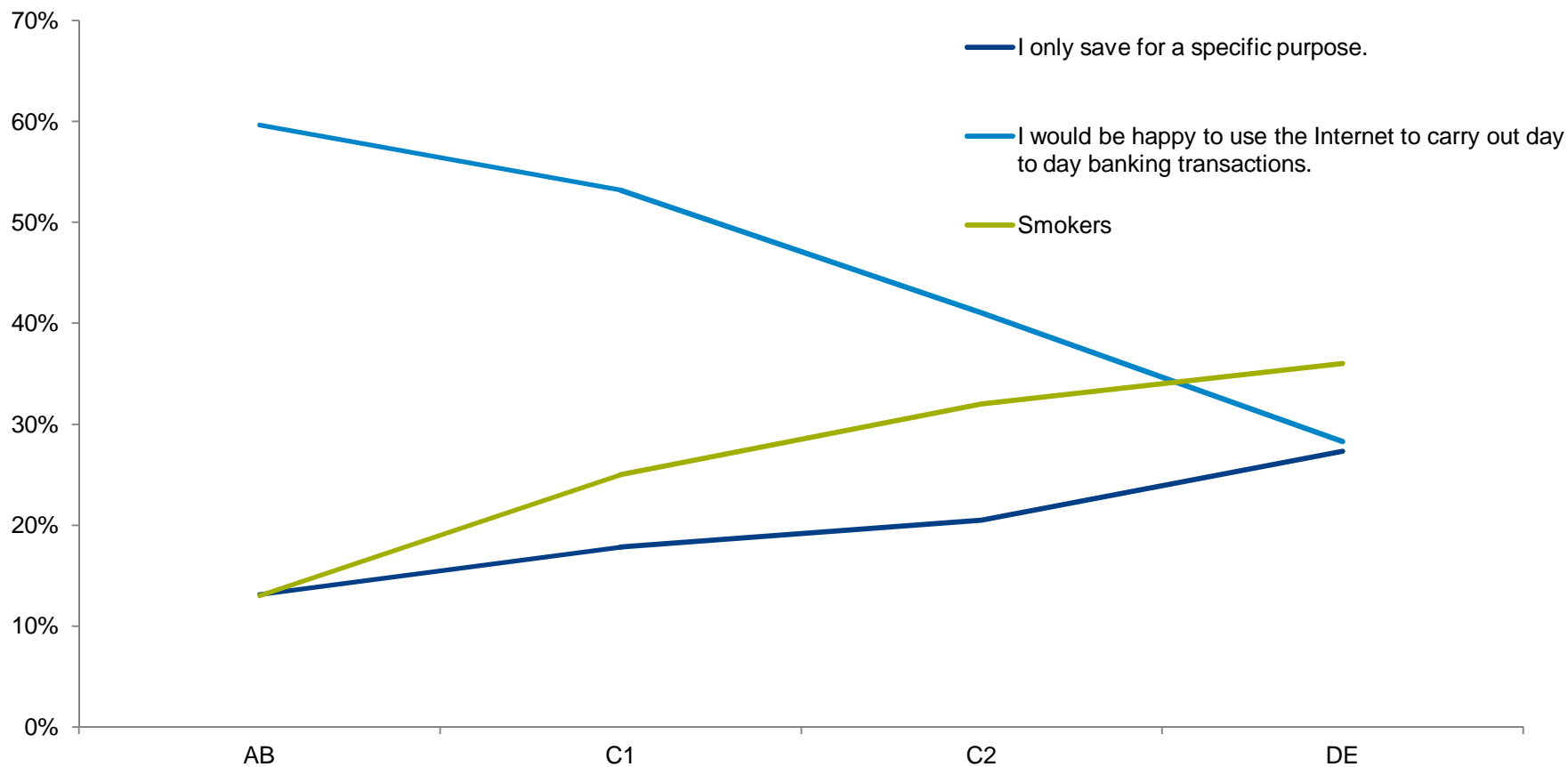
Source: BARB, 2013 – Average number of minutes watching each of 5 channels as a proportion of time spent watching any of 5 terrestrial channels

Wealth and education



Source: Financial Research Survey June 2013

Differentiates on attitudes & behaviours

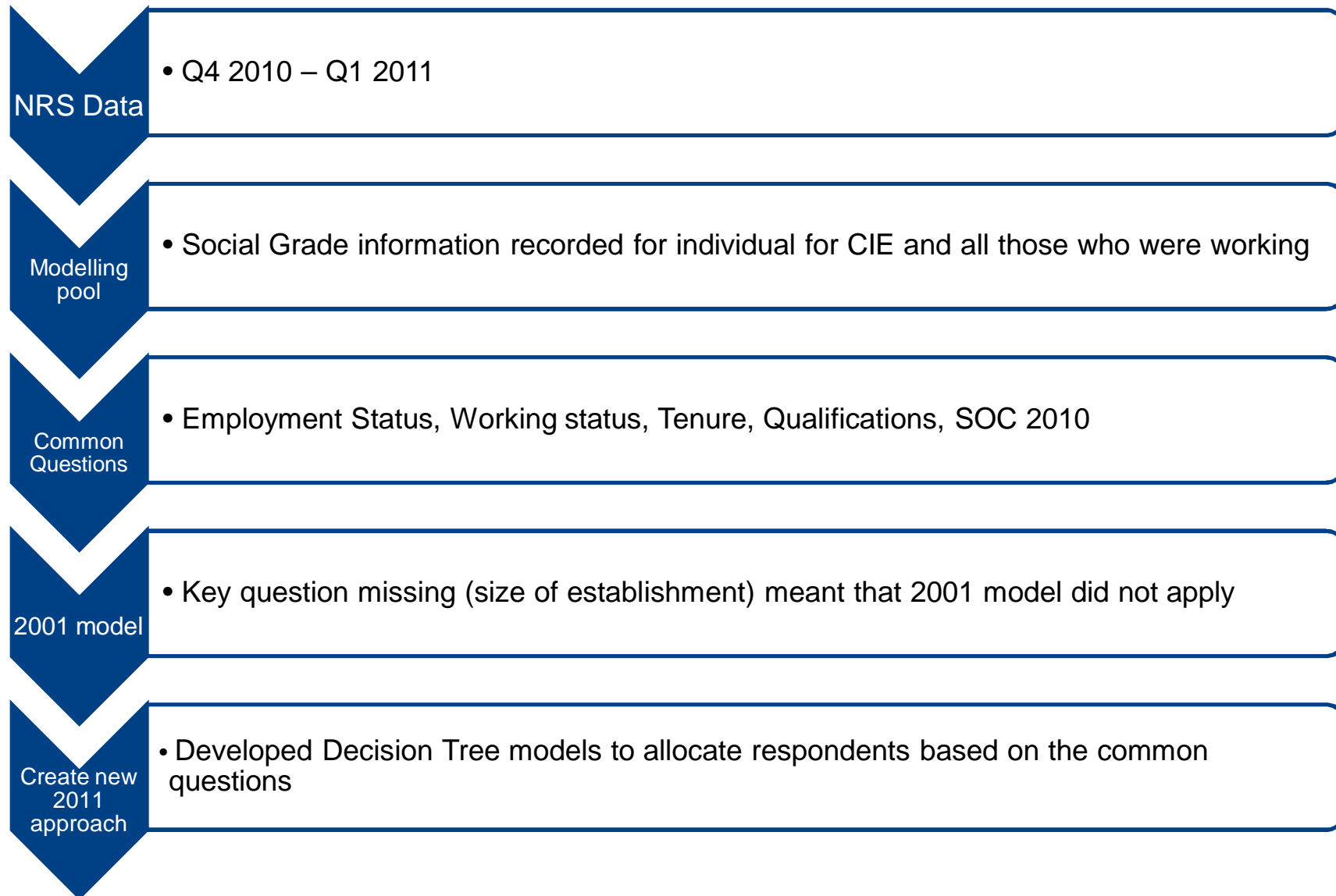


Sources: Financial Research Survey ,June 2013, % Smokers - Lifecourse Tracker survey Wave 2, Oct 13

https://www.gov.uk/government/uploads/system/uploads/attachment_data/file/251802/Lifecourse_Tracker_survey_Wave_2_Report_final.pdf

Developing the model for Census 2011

Developing the model for Census 2011



Accuracy of model

Percentage of Actual Social Grade of respondent correctly predicted by model

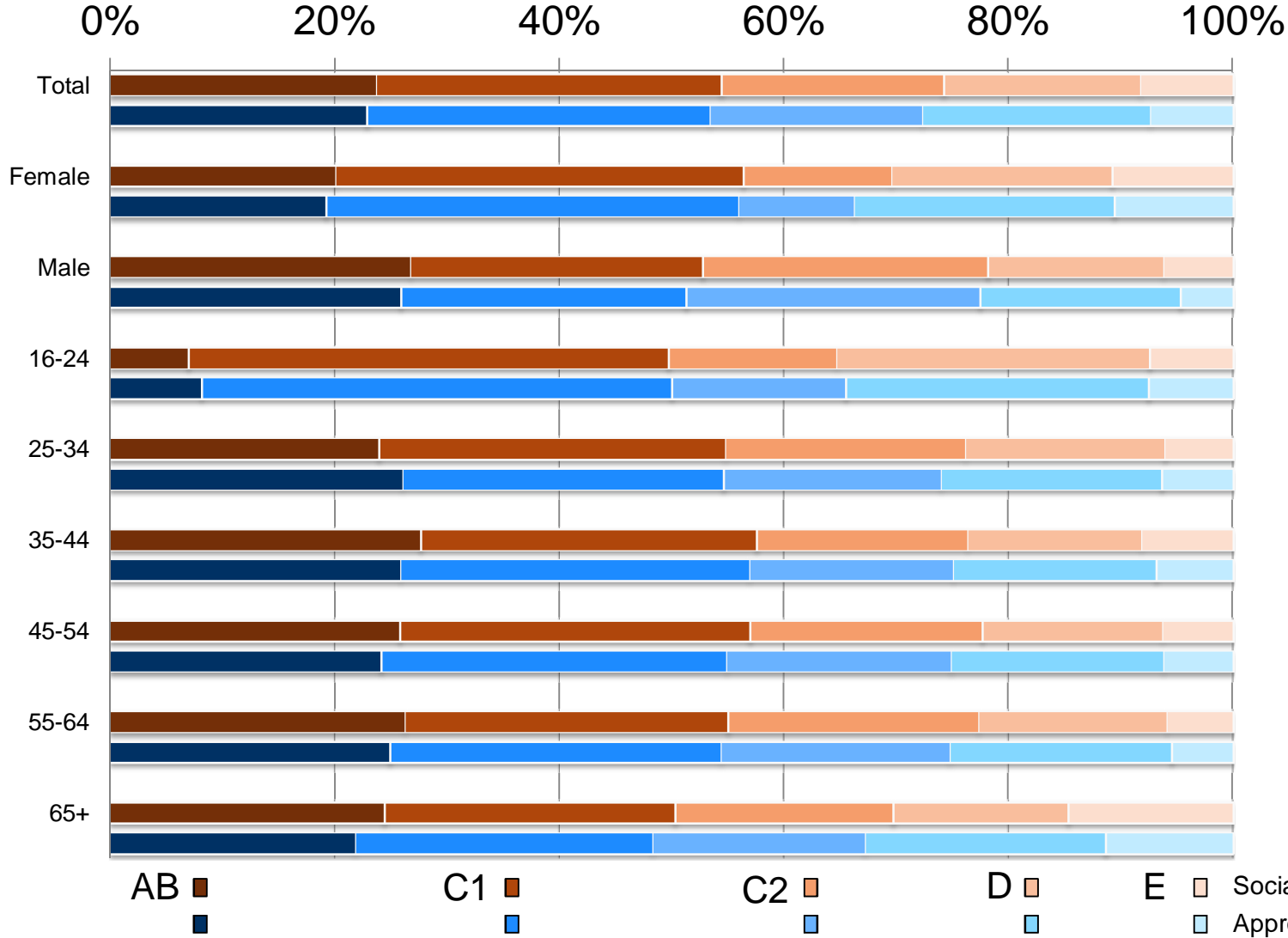


	Social Grade in NRS					
Predicted Social Grade	AB	C1	C2	D	E	DE
AB	77%	12%	3%	1%	2%	1%
C1	19%	74%	9%	5%	9%	6%
C2	2%	7%	66%	14%	7%	11%
D	1%	5%	19%	75%	17%	53%
E	1%	2%	3%	6%	66%	29%
DE	2%	7%	21%	81%	83%	82%
Total	100%	100%	100%	100%	100%	100%

Source: NRS (Q4 2010 – Q1 2011)



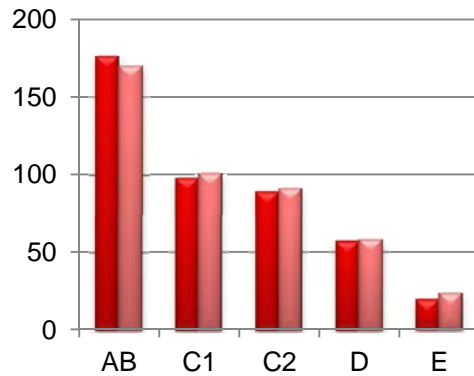
Comparing the profiles



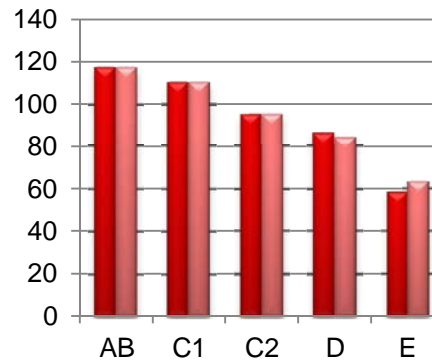
Comparing discrimination - indices between actual and modelled Social Grade



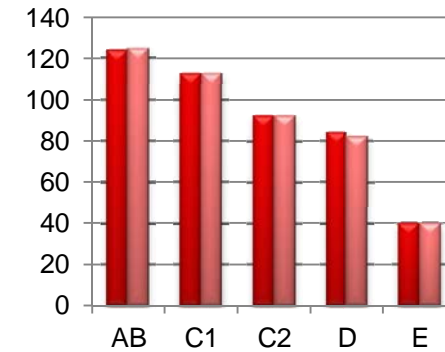
Average income



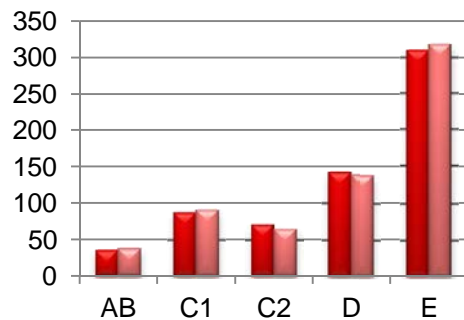
Accessed the internet



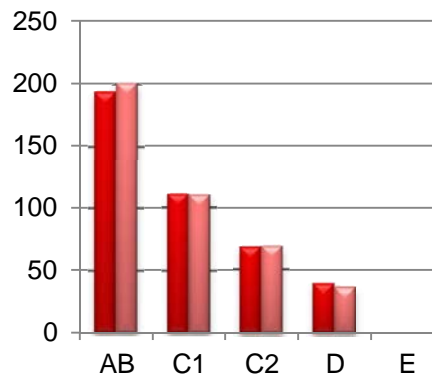
Holidays in last 3 years



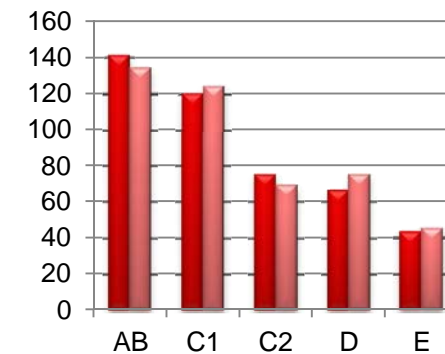
Number of cars - none



Taken out a mortgage



Has store card



Source: NRS (Q4 2010 – Q1 2011)

© GfK 2013 | Approximation of Social Grade on the Census 2011: How & Why? | 06. Nov 2013

■ Social Grade ■ Approximation

Comparing with other Sources

Compared with the NRS modelling data

Census: Higher Allocations to D instead of E

Retired

Unemployed

Census: Slightly Lower allocation into AB in favour of C1

Most noticeable in 65+

Most likely due to the allocation based on previous occupation

Comparing with Census 2001 – Limited Trend analysis at present



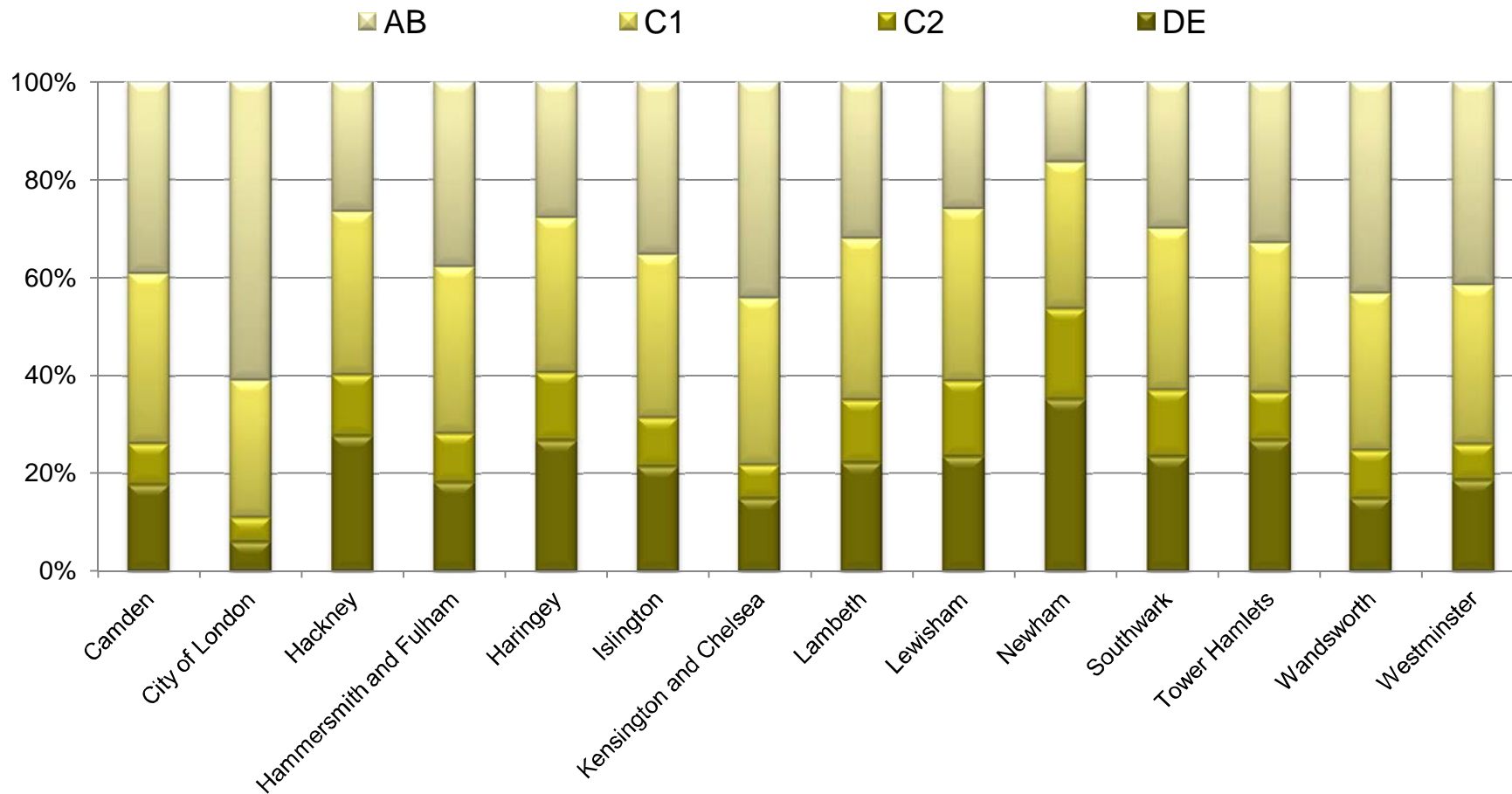
Census 2011 is published so far based on counts for Household Reference Persons aged 16 – 64

2001 census based on ASG of HRP for Any age and applied to all persons

Looking to release for All persons for 2011, but still work in progress

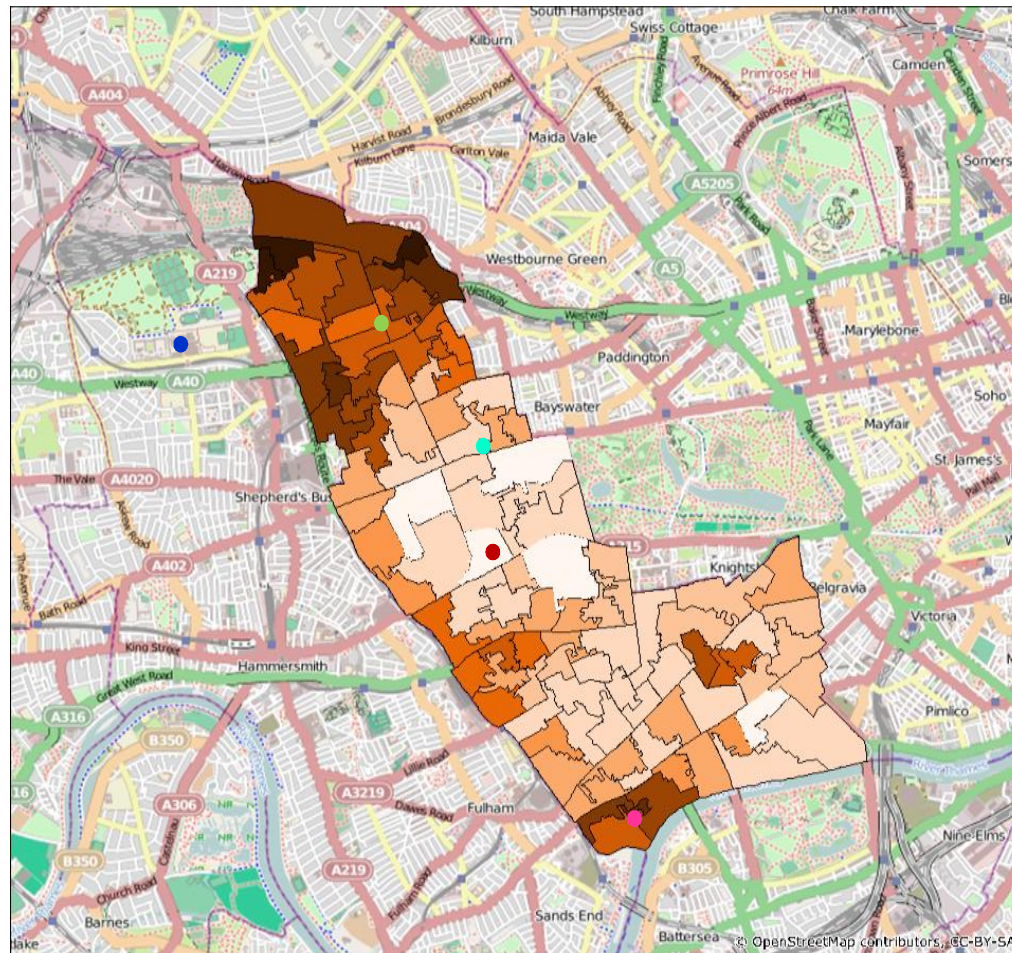
Examples from the 2011 Census

Example Results – Approximated Social Grade for Inner London Boroughs

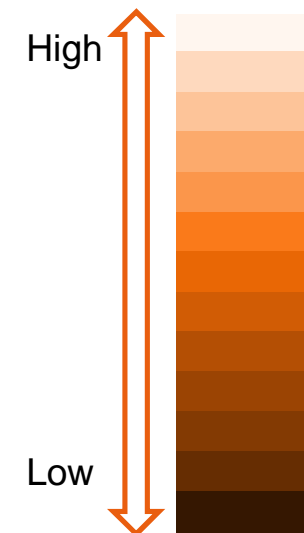


2011 Census: Approximated social grade for local authorities in England and Wales
 Base: All household reference persons aged 16 to 64 in households
 Source: Office for National Statistics

% AB within Lower Super Output Area – Kensington & Chelsea



- Notting Hill Tube
- Ladbroke Grove Tube
- Wormwood scrubs
- World's end estate (400K)
- Essex Villas (£7.5m)



2011 Census: Approximated social grade for LSAO in Kensington & Chelsea
 Base: All household reference persons aged 16 to 64 in households

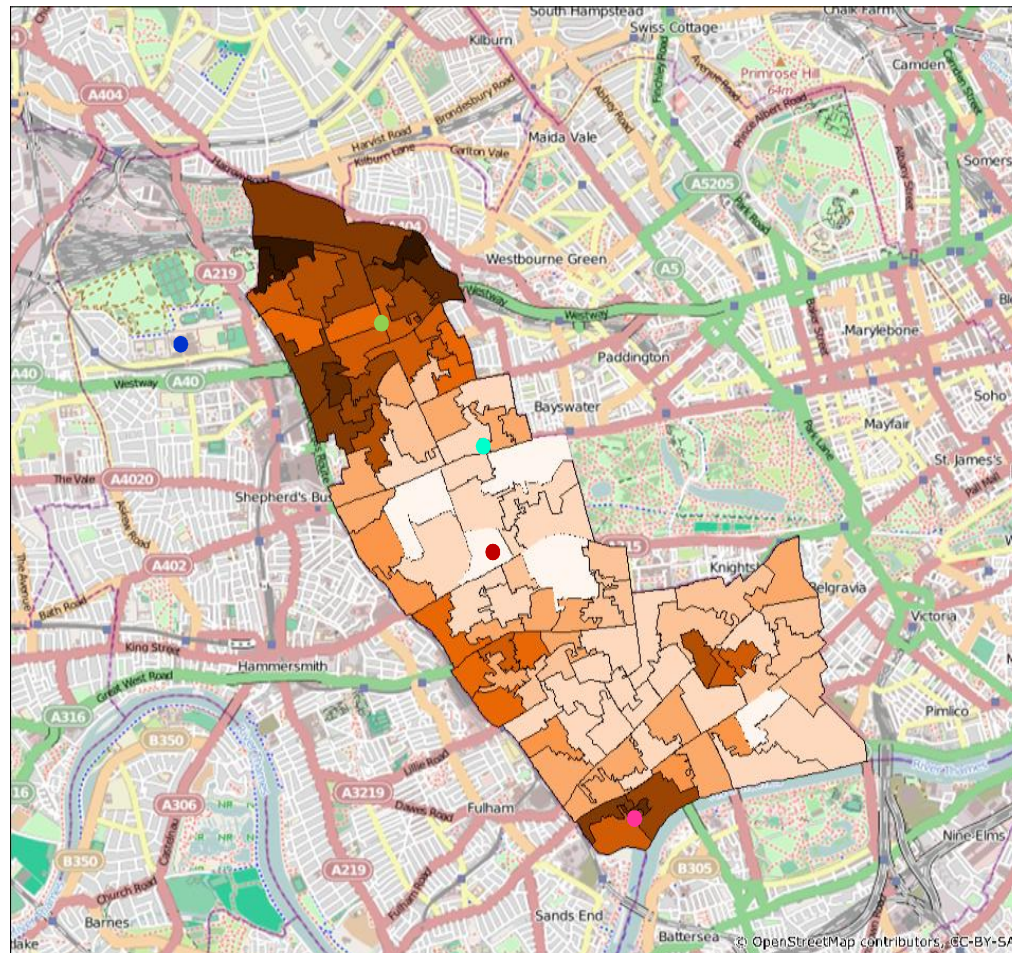
Source: Office for National Statistics

Essex Villas (average House price £7.5m)

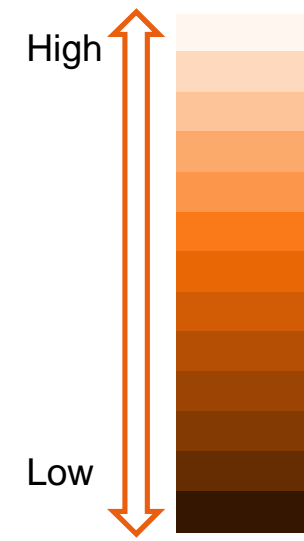


Source: House price data: Zoopla, Oct 2013, Image: Google maps

% AB within Lower Super Output Area – Kensington & Chelsea



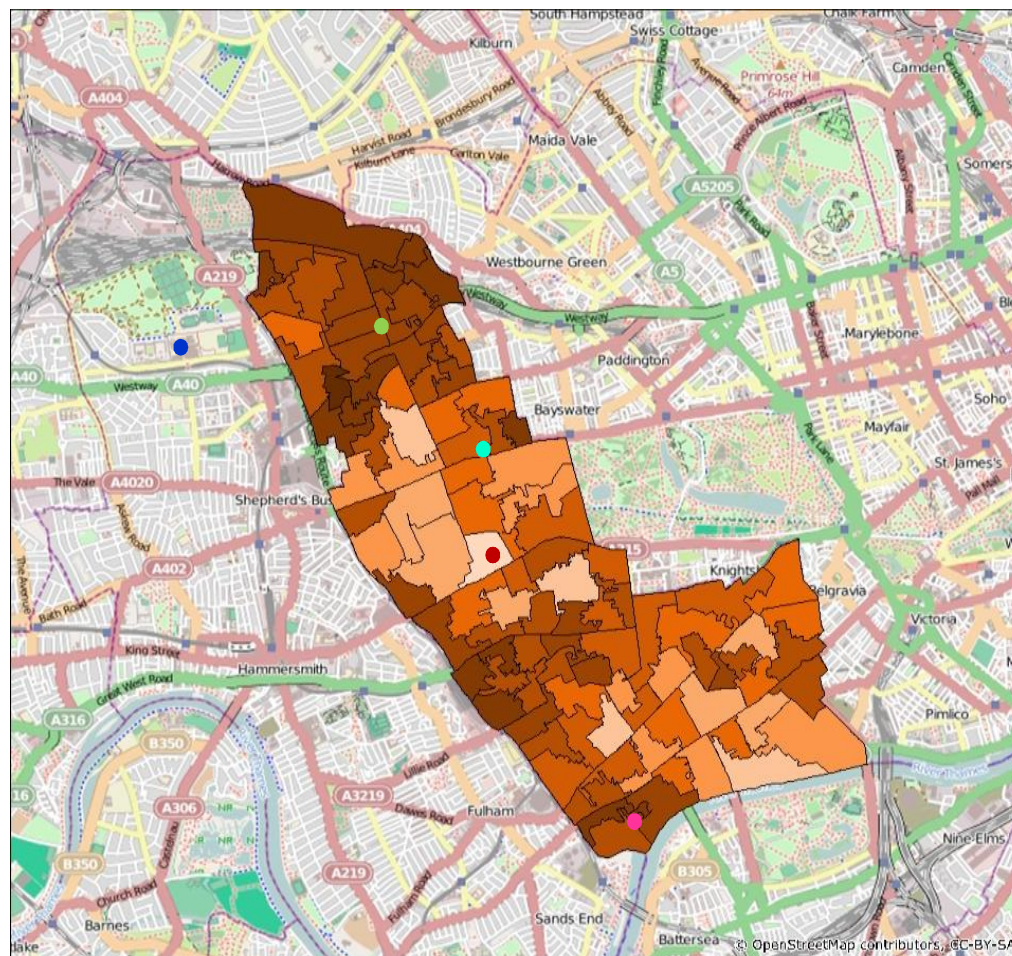
- Notting Hill Tube
- Ladbrooke Grove Tube
- Wormwood scrubs
- World's end estate (400K)
- Essex Villas (£7.5m)



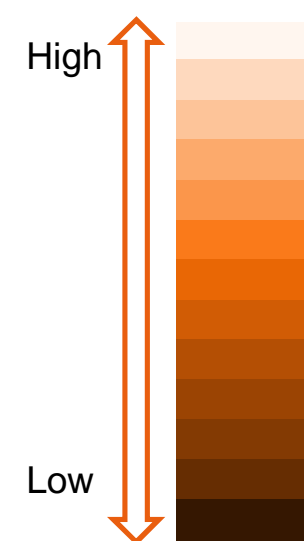
2011 Census: Approximated social grade for LSAO in Kensington & Chelsea
 Base: All household reference persons aged 16 to 64 in households

Source: Office for National Statistics

Average number of cars per household - within Lower Super Output Area – Kensington & Chelsea



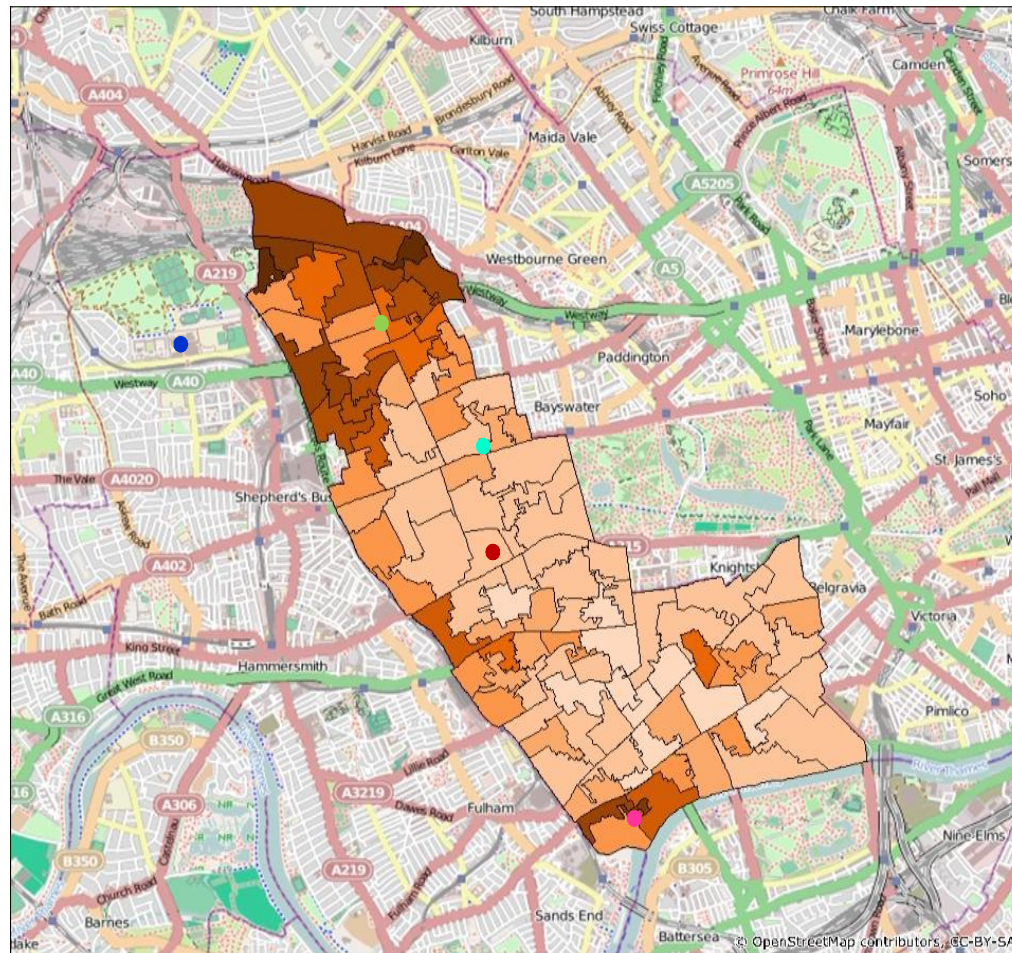
- Notting Hill Tube
- Ladbroke Grove Tube
- Wormwood scrubs
- World's end estate (400K)
- Essex Villas (£7.5m)



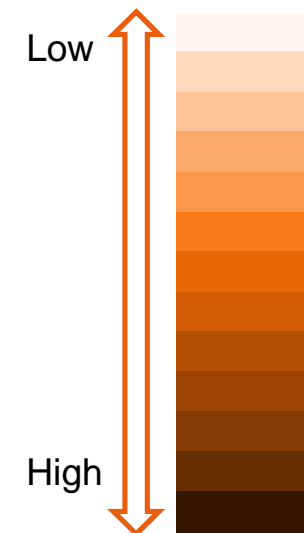
2011 Census: Approximated social grade for LSAO in Kensington & Chelsea
 Base: All household reference persons aged 16 to 64 in households

Source: Office for National Statistics

% DE - within Lower Super Output Area – Kensington & Chelsea



- Notting Hill Tube
- Ladbroke Grove Tube
- Wormwood scrubs
- World's end estate
- Essex Villas



2011 Census: Approximated social grade for LSAO in Kensington & Chelsea
 Base: All household reference persons aged 16 to 64 in households

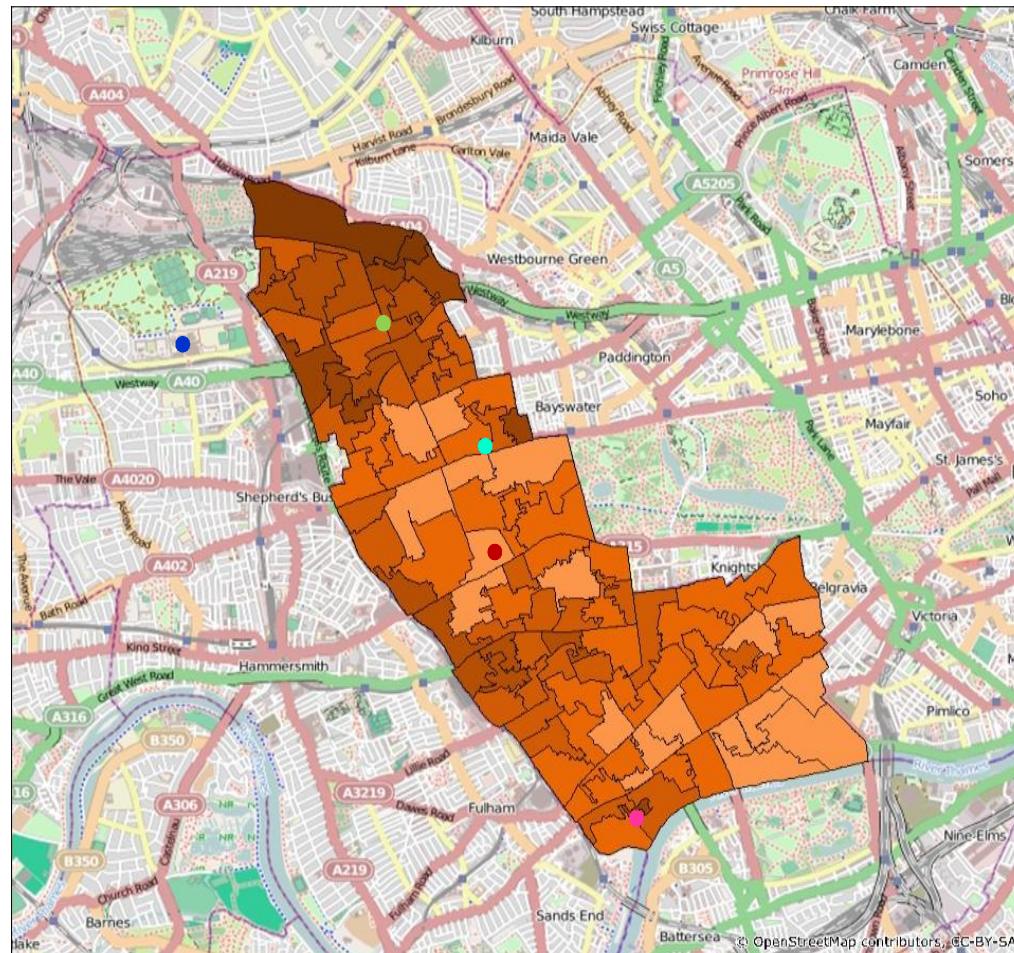
Source: Office for National Statistics

World's end estate (average house price £400K)

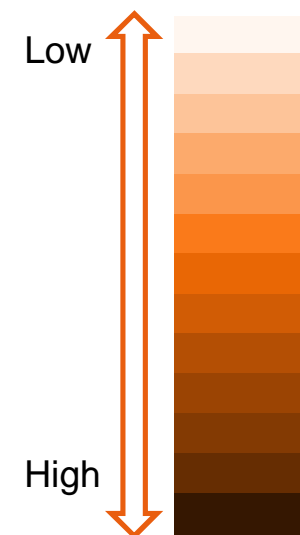


Source: House price data: Zoopla, Oct 2013, Image: Google maps

Average number of persons per room per household - within Lower Super Output Area – Kensington & Chelsea



- Notting Hill Tube ●
- Ladbroke Grove Tube ●
- Wormwood scrubs ●
- World's end estate (400K) ●
- Essex Villas (£7.5m) ●



2011 Census: Approximated social grade for LSAO in Kensington & Chelsea
 Base: All household reference persons aged 16 to 64 in households

Source: Office for National Statistics

More information and other potential uses of ASG from Census 2011



https://www.mrs.org.uk/cgg/social_grade

<http://www.nomisweb.co.uk/census/2011>

<http://www.ons.gov.uk/ons/publications/re-reference-tables.html?edition=tcm%3A77-301985>

http://www.nomisweb.co.uk/census/2011/bulk/r2_2

Potential Uses:

Geo-demographic Analysis

Targeting Local Markets

Sample Design & Execution for Survey research

Link to Customer databases or Survey research